

PORT RASHID MASTER PLAN

ROLE

Senior Architect, Urban Designer, Design Review

LEAD ARCHITECT

Dr. Rula Saddiq (*Nakheel*)

ARCHITECTS

Mahmoud Tannir
Amr A. Fattah

CLIENT

Nakheel

CATEGORY

Mixed use - Residential, Retail,
Commercial, Hospitality, Leisure

PROJECT DETAILS

Plot size: 760 ha
GFA: 1.95 sqkm W

PHASE

On Hold

BRIEF

Port Rashid, will host a very wide range of community facilities including schools, mosques, museums, parks, hospital and medical centre. It is to become home to a new luxury cruise terminal and a major contributor to growing Dubai's tourism offering. All of this would be achieved by preserving the heritage of the area and looking towards the needs of Dubai's future generations ensuring that the legacy lives on. The redevelopment will be a tribute to the memory of His Highness Sheikh Rashid bin Saeed Al Maktoum, the father of modern-day Dubai.

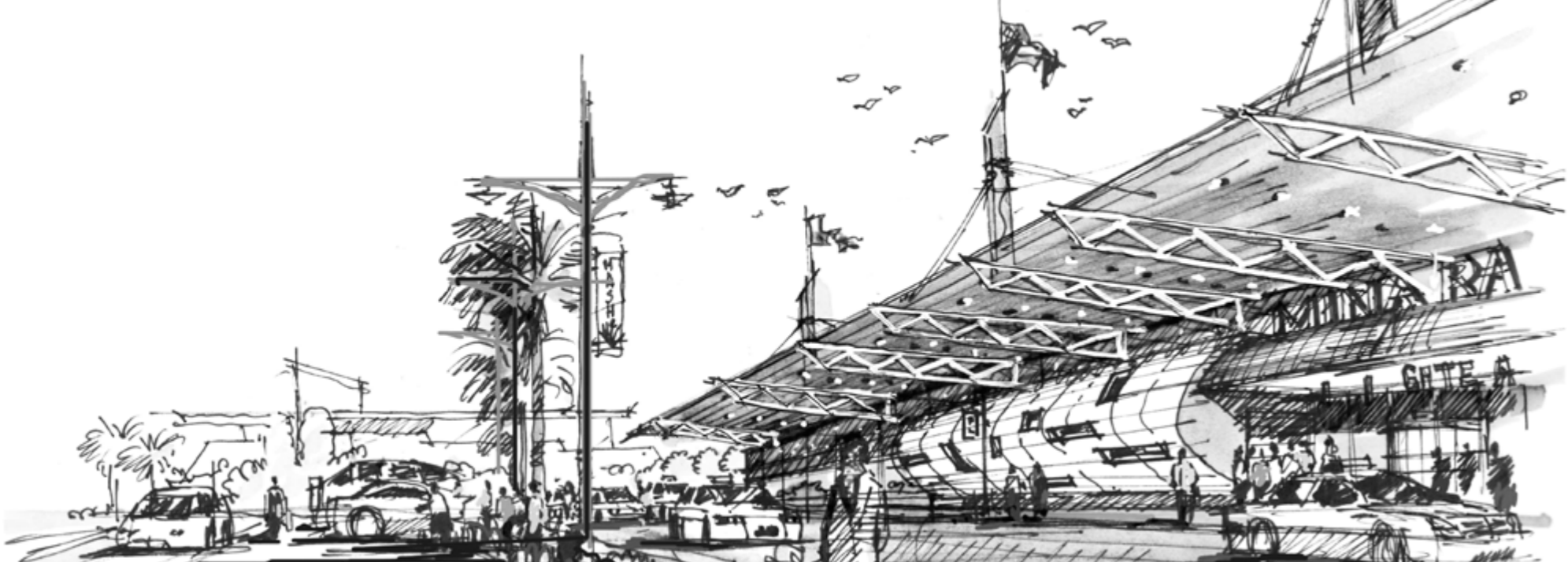


3D Perspective of Business District

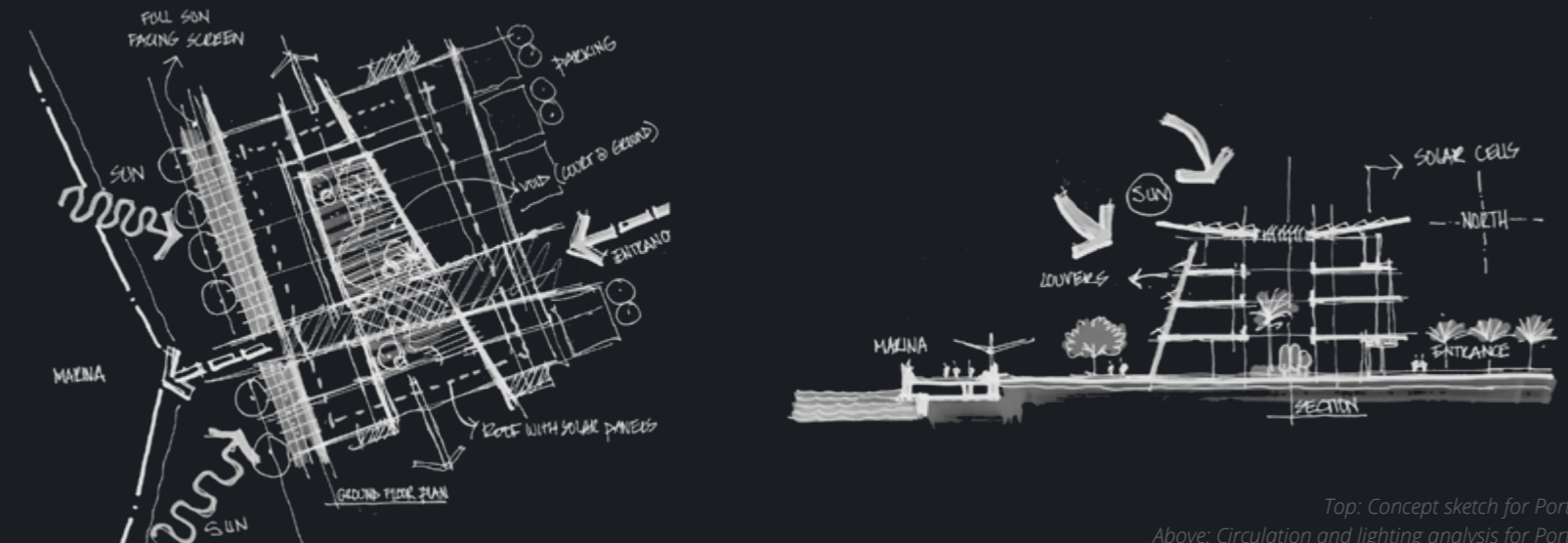


Port Rashid proposed masterplan





CONCEPT SKETCHES

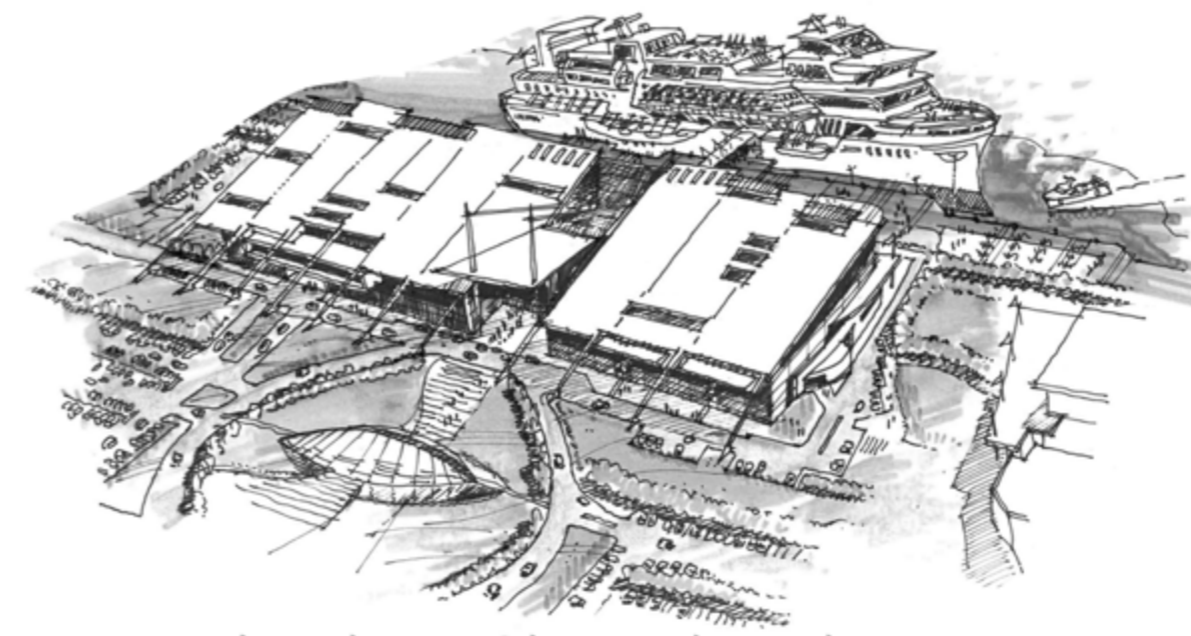


Top: Concept sketch for Port Rashid Cruise Terminal
 Above: Circulation and lighting analysis for Port Rashid Cruise Terminal

PORT RASHID HERITAGE DISTRICT

PRESERVING THE CULTURAL HERITAGE OF THE PORT

The main concept behind Port Rashid was to be sympathetic and pay homage to the maritime history that helped shape the success of the emirate. Putting that in mind the development will include a maritime museum, and we will ensure that the importance of the site and the people who have worked and lived there since its creation are preserved for future generations. The new terminal is designed to handle four ships simultaneously and cater to the increased number of ship calls. This building functions as the terminal building for the in-coming and the out-going passengers traveling through cruise ships in Dubai. It will also home the Queen Elisabeth 2 cruise ship.



Above: Early aerial concept sketch of Dubai Cruise Terminal
 Right: Rendered Design Sketches of the Heritage District of Port Rashid



THE FRONDS (SPINE) MOSQUE

ROLE

Concept Architect, Urban Designer, Design Review

LEAD ARCHITECT

Dr. Rula Saddiq (*Nakheel*)

ARCHITECTS

Mahmoud Tannir
Amr A. Fattah

CLIENT

Nakheel

CONSULTANTS

Yaghmour Architects

CATEGORY

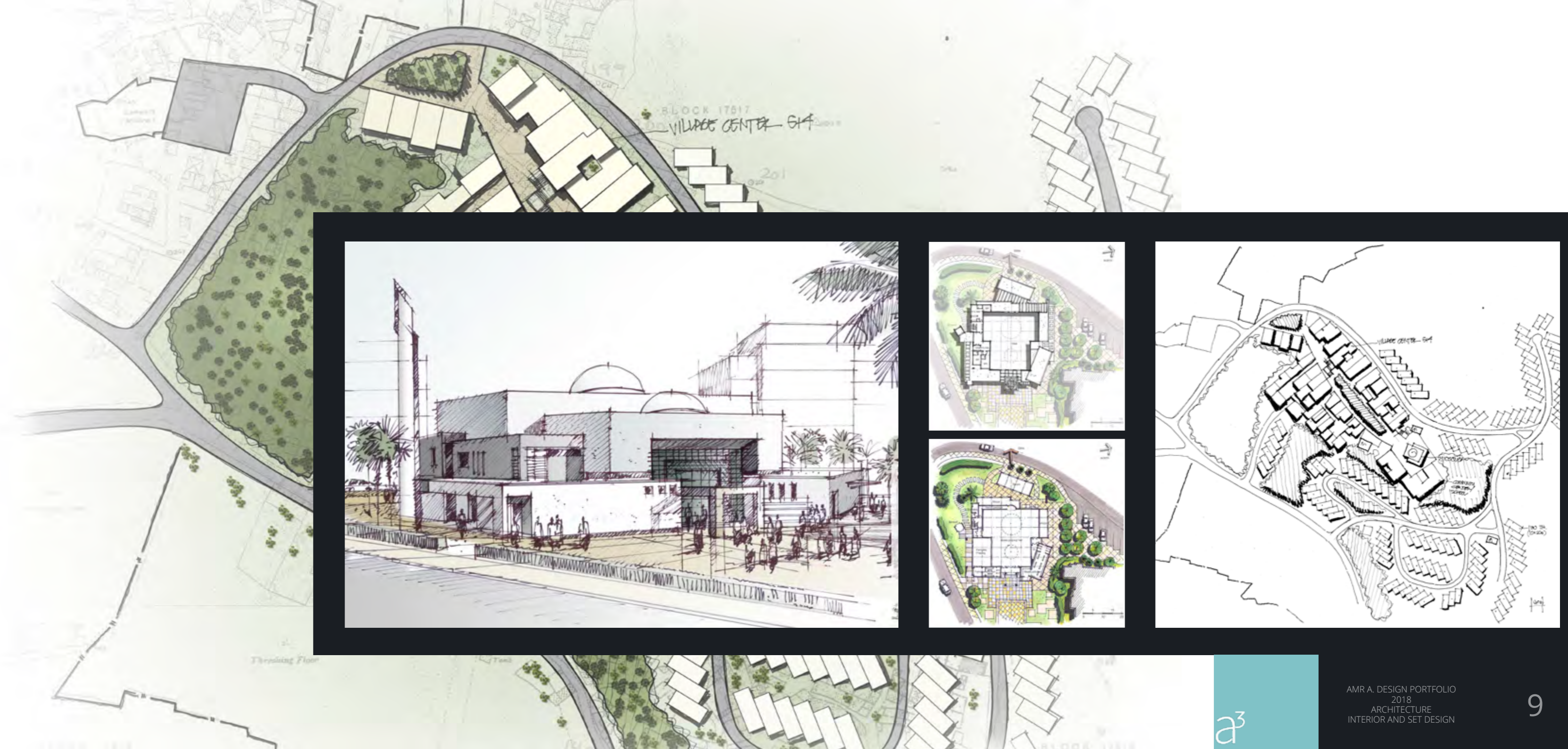
Mosque

PROJECT DETAILS

GFA: 740 sqm

PHASE

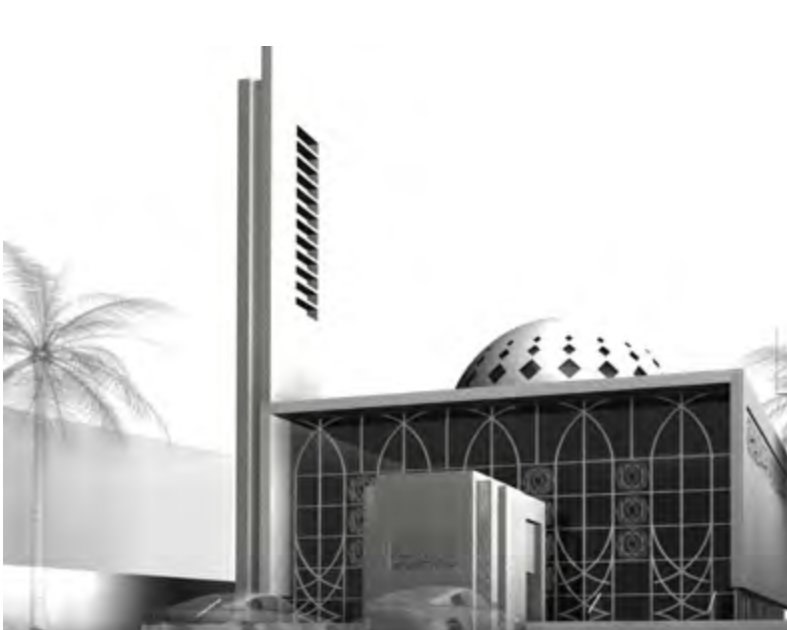
Construction Complete



THE SPINE MOSQUE

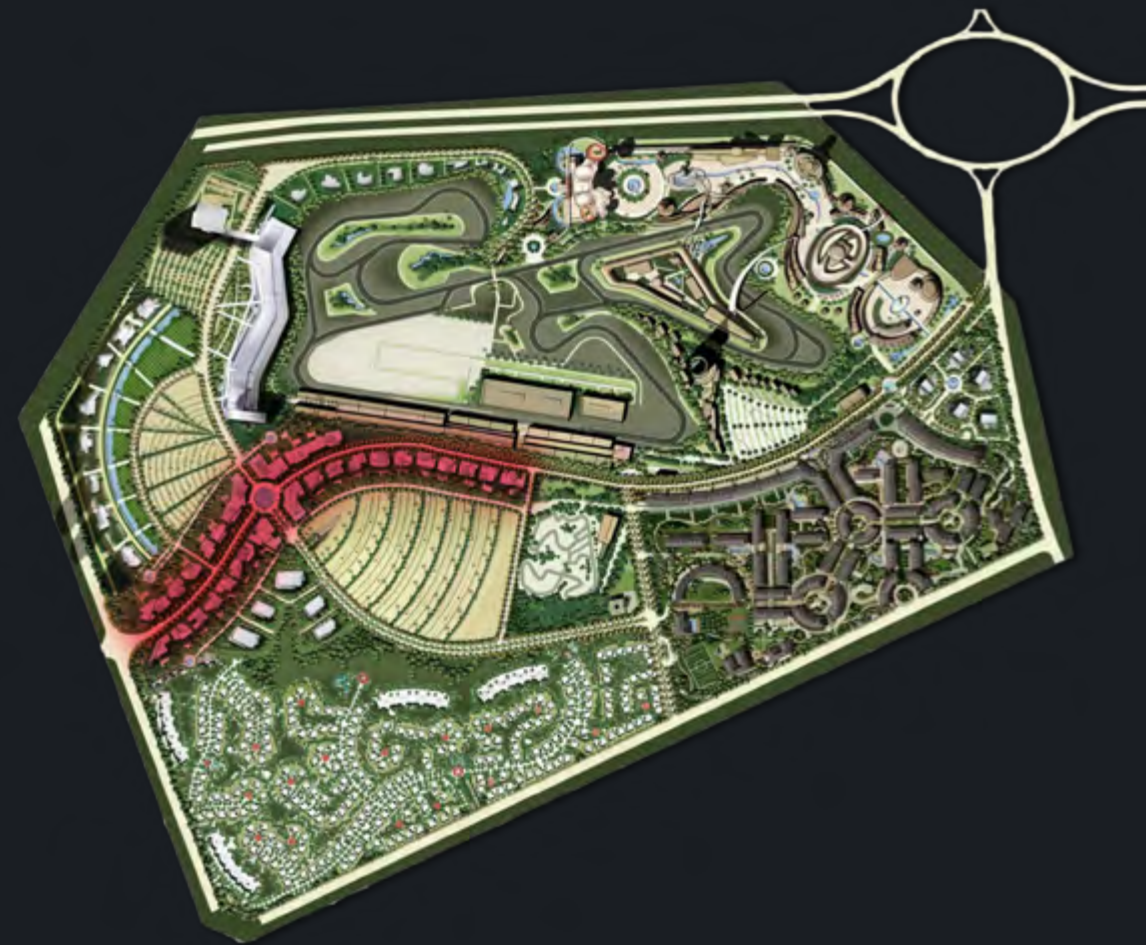
DESIGN BRIEF

Being the first mosque developed by Nakheel, our design team was tasked to conceptualise an iconic mosque on Port Rashid. Then later the location changed to Palm Jumeirah. It had to be modern and far from the traditionalist designs, which are most mosques in the UAE. We had a few options to present until we got an approval on one of the design concepts. Clean-lined cubist forms best describes it. Yagmour architects were then brought in to develop the concept and worked side by side, bringing it to what it is today; the first contemporary mosque in UAE history.



MOTOR CITY MASTER PLAN

HIGH STREET HIGHLIGHTED IN RED



HIGH STREET DUBAI MOTOR CITY

ROLE

Concept Design Architect, Senior 3D Visualiser

LEAD ARCHITECT

Ivar Krasinski, Thomas Gulisek (Burt, Hill)

CLIENT

Union Properties

CATEGORY

Mixed use Residential, Retail,
Commercial, Hospitality, Leisure, Sports

PROJECT DETAILS

Plot size: 8 ha
GFA: 22,000 sqm

PHASE

Complete

HIGH STREET DUBAI MOTOR CITY

High Street retail strategy was based on the critical mixture of the “Synergy Triad” of Generator, Inducer and Extender, to ensure customer activity and retail success. In addition to traditional F&B and retail outlets, Boutique Hotels and Signature Restaurants were strategically located at key junctures to enhance the environment and provide a touch of class to the boulevard. As part of the MotorCity master plan, a main street retail and commercial spine was created to provide a 3-kilometer long active corridor for the destination development. This grand boulevard was inspired by the classic promenades of Europe like the Champs Elyses, drawing from their principal of street cross-section and building proportions. On the center of the spine is the Champion’s Plaza, a grand gesture and main entrance to the racetrack during race day, when the street becomes animated with spectators and carnival spirit.



Above: Rendered proposed concept sketch of Plot M

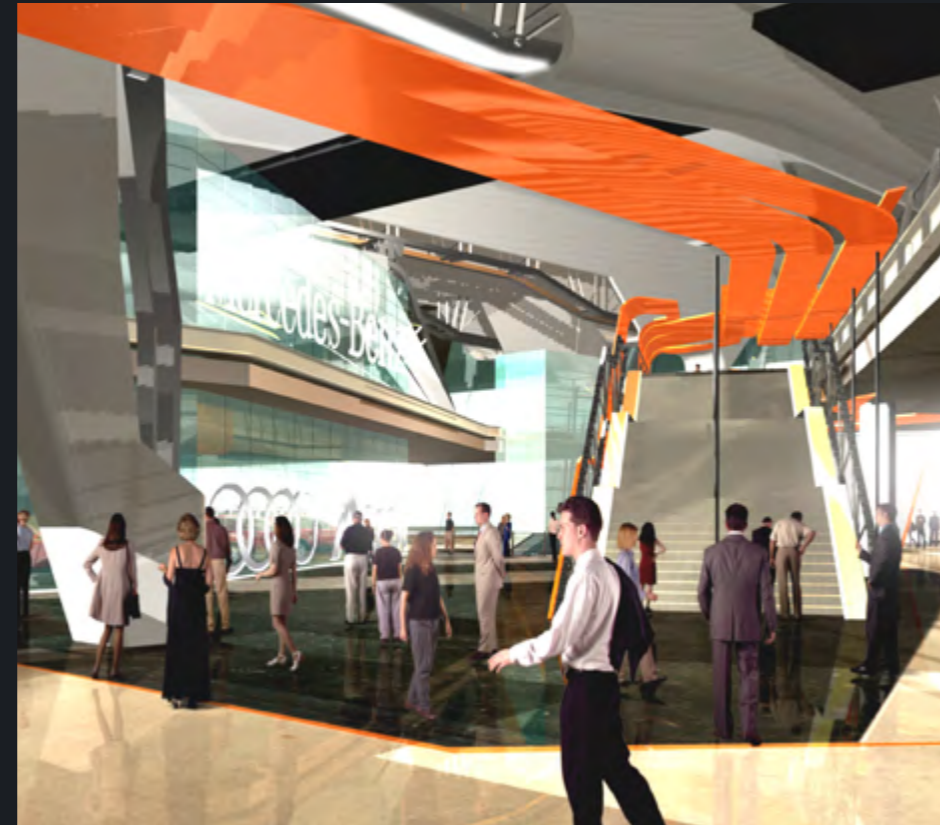


HIGH STREET ELEVATION

RENDERED ELEVATION OF THE RIGHT SIDE OF HIGH STREET. THE LABELS INDICATE PHASES AND PLOTS



DUBAI AUTODROME AUTOMALL, OFFICE + HOTEL



ROLE
Concept Design Architect, Senior 3D Visualiser

LEAD ARCHITECT
Ivar Krasinski (Burt, Hill)

CLIENT
Union Properties

CATEGORY
Commercial, Hospitality, Retail, Mixed-Use, Sports

PROJECT DETAILS
Plot size: 9 ha
GFA: 214,000 sqm

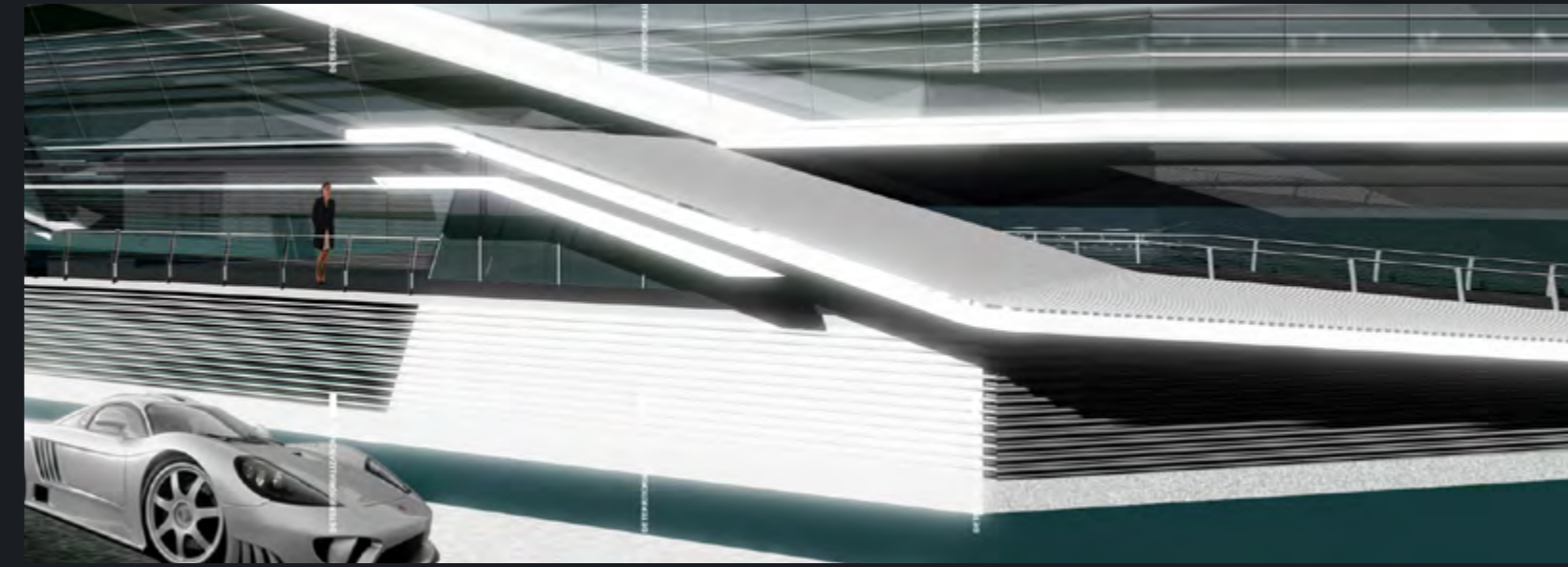
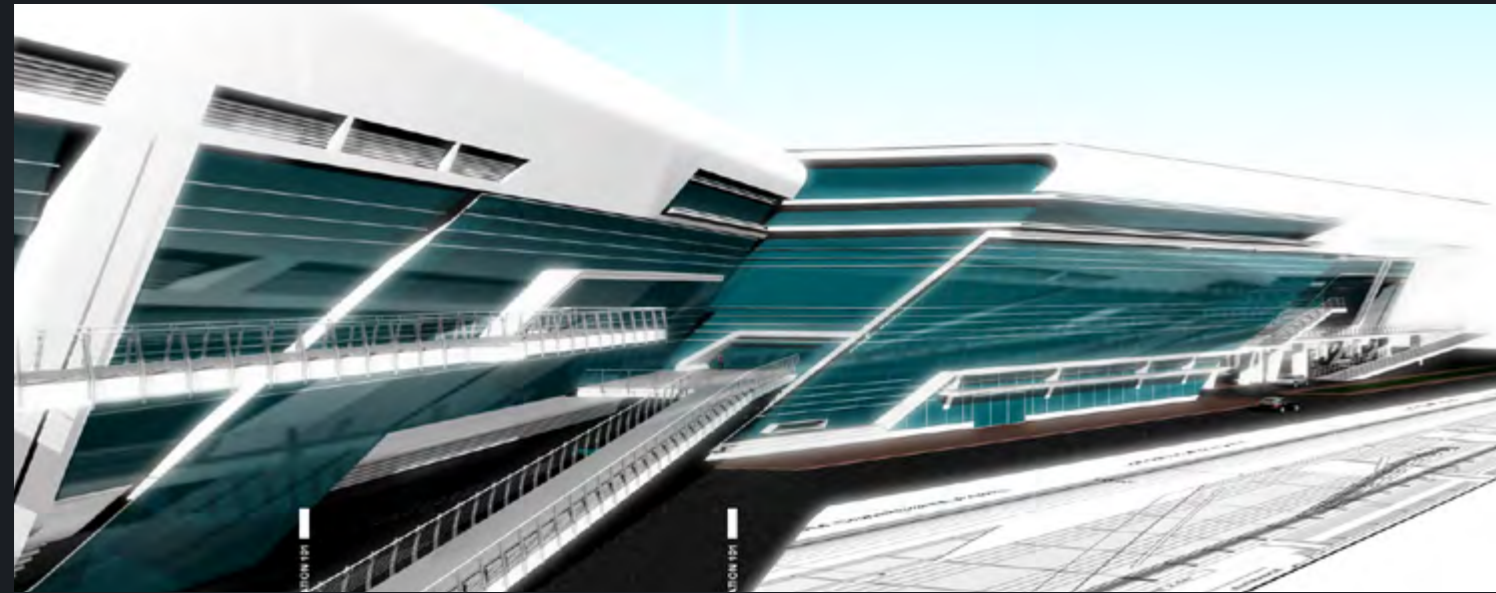
PHASE
Complete



AUTOMALL, OFFICE + HOTEL

The project is a 38 Storey Office tower with retail podium linked to the Automall. The 80,00 sqm towers is located over turn 1 of Dubai Autodrome racetrack with a clear view of the pit straight. The orientation of the building mass is optimized to minimise solar heat gain, with the facade designed to shelf shade with horizontal and vertical projections which ensure less even less direct solar heating.

The podium contains dining facilities which are linked to the adjacent Automall showroom. This design incorporates many Green aspects and Energy Saving features that make this a unique and comprehensive facility. This massive facility twists and turns to follow along a unique set of turns on the track. The three elements of the complex – the showrooms, offices, and hotel – are part of a unified flowing form that bends, splits, twists, and intersects with itself to create functional spaces.

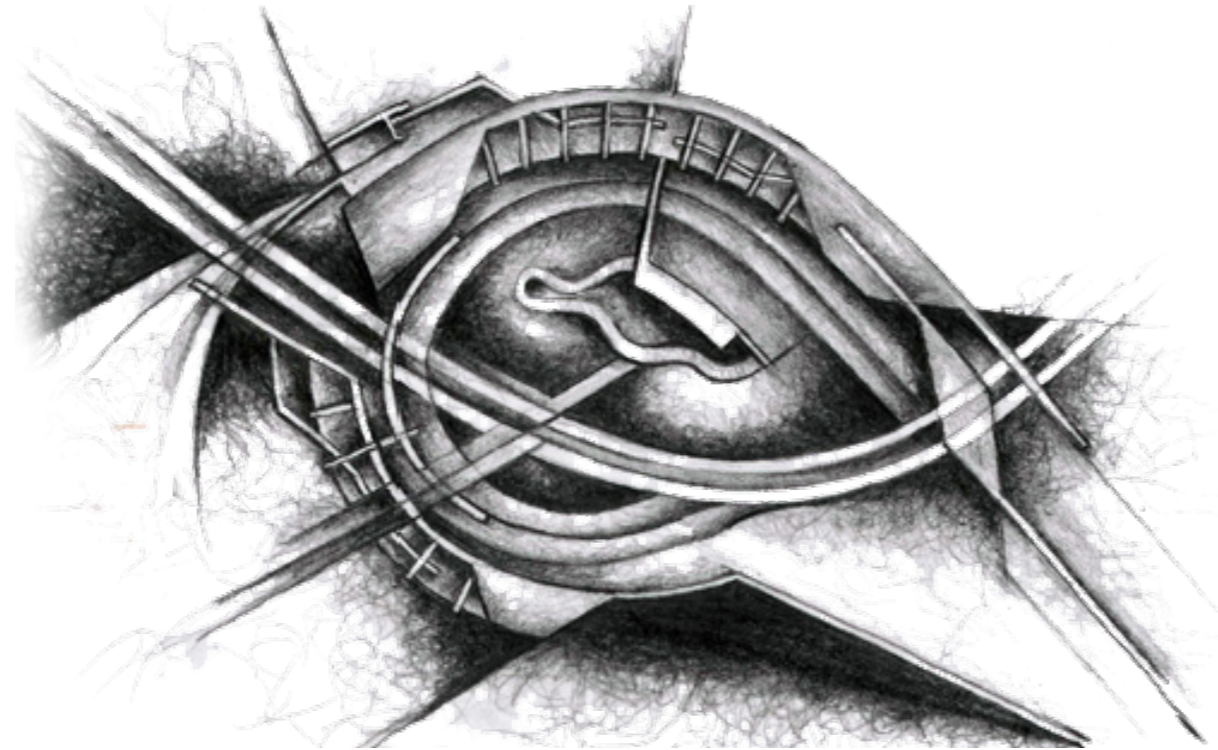


3D Perspectives of the Automall Podium facing the race track



F1X MARRIOTT COURTYARD HOTEL

The F1X Hotel and Theme Park are designed in a dynamic way so as to complement the Formula One racing environment while simultaneously complementing the overall theme of Motor City. Celebrating the spirit of Formula One racing, F1X is an exhilarating theme park that combines the excitement of Formula One racing and first class entertainment facilities. The F1X Theme Park provides endless entertainment in the ways of shopping, racing, museums, an IMAX theater, the largest roller coasters in the Middle East, racing simulations and even a Formula One driving school. This park delivers a once in a lifetime experience.



Above: Early concept sketch and physical model of the F1X Hotel



Above: 3D Perspective of F1X Hotel & plaza

CONSTRUCTION PHOTOS



TATWEER TOWERS DUBAILAND

ROLE
Concept Architect, Architect, 3D Visualiser

LEAD ARCHITECT
Ivar Krasinski (Burt, Hill)

CLIENT
Mizin

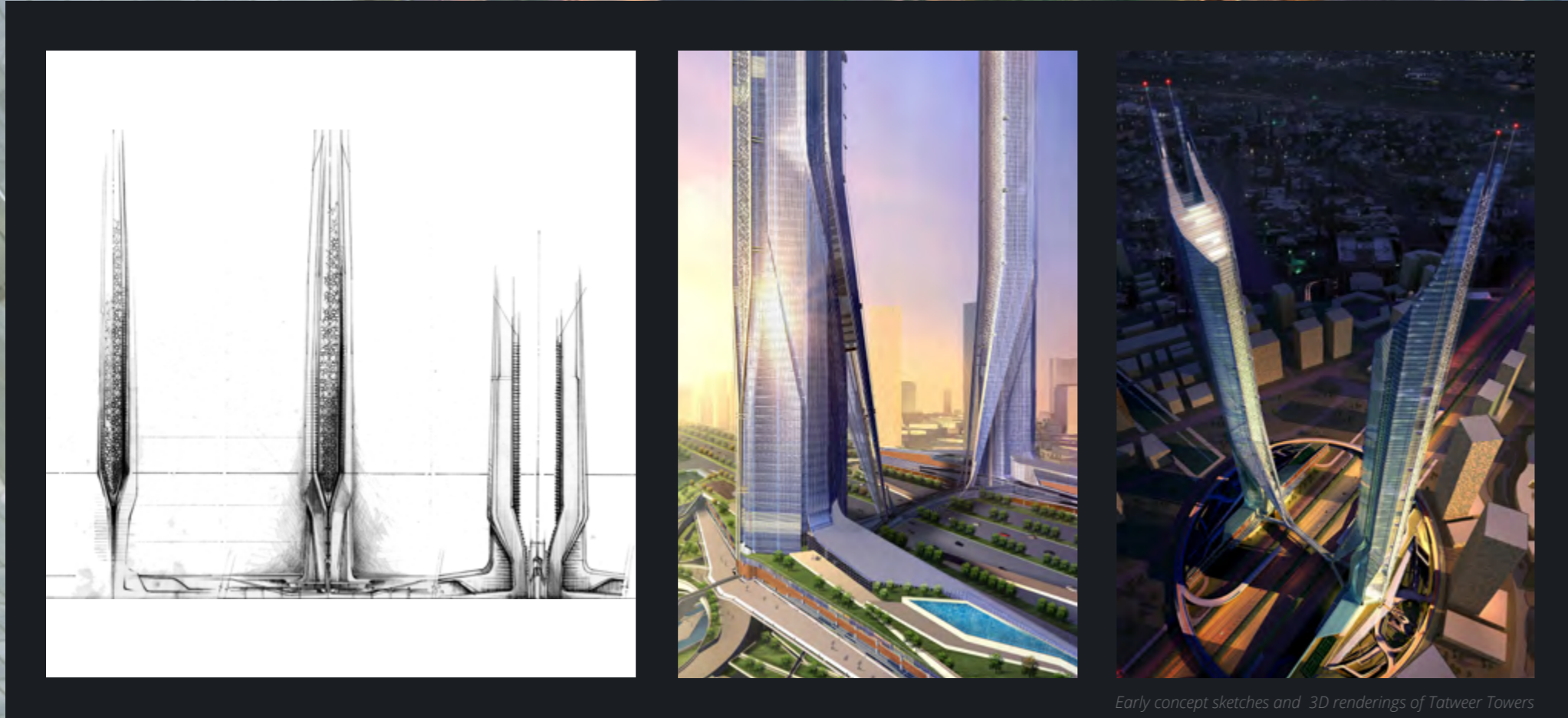
CATEGORY
Commercial, Hospitality, Retail, Mixed-Use, Sports

PROJECT DETAILS
Plot size: 12 ha
GFA: 700,000 sqm

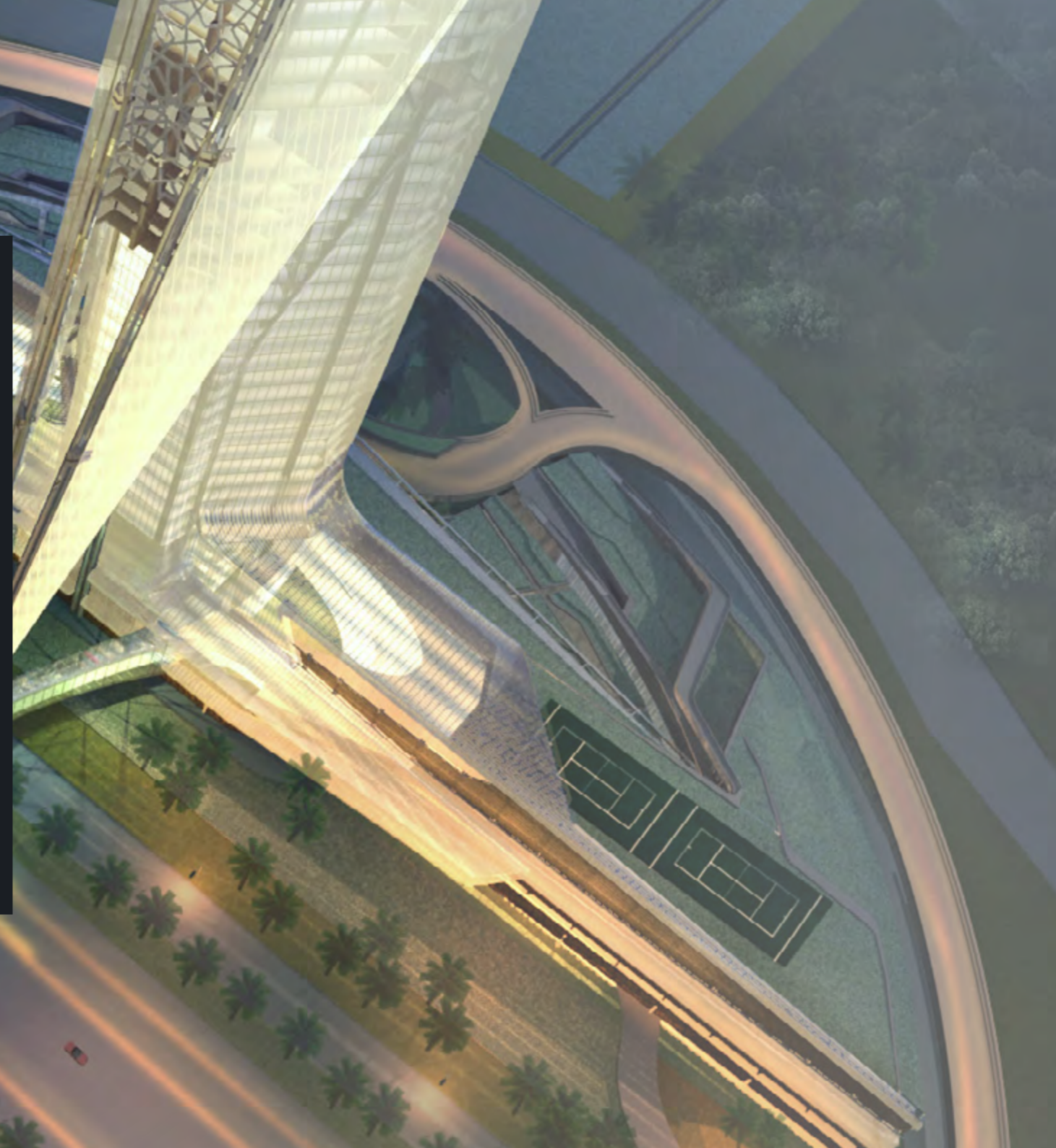
PHASE
On Hold

Design Brief

The 120 storey 7 Million sf Twin towers connected by a bridge spanning over Emirates Road, forming the gateway to Dubailand. The project was split into two main components, residential and commercial, with the podium providing a critical link between a rail station and adjacent developments in the surrounding area. The uppermost levels contain executive floors, presidential and royal suites while the podium contains retail, conference facilities and banquet halls.



Early concept sketches and 3D renderings of Tatweer Towers





BRIDGEPOINT RESIDENTIAL TOWER



3D Perspectives of Bridgepoint



Typical floor Plan

JVC RESIDENTIAL TOWER



Above: Early Sketch of JVC Tower & Typical floor Plan



3D Perspectives of JVC Tower





AL TAJIR RESIDENTIAL TOWER



Typical Floor Plan

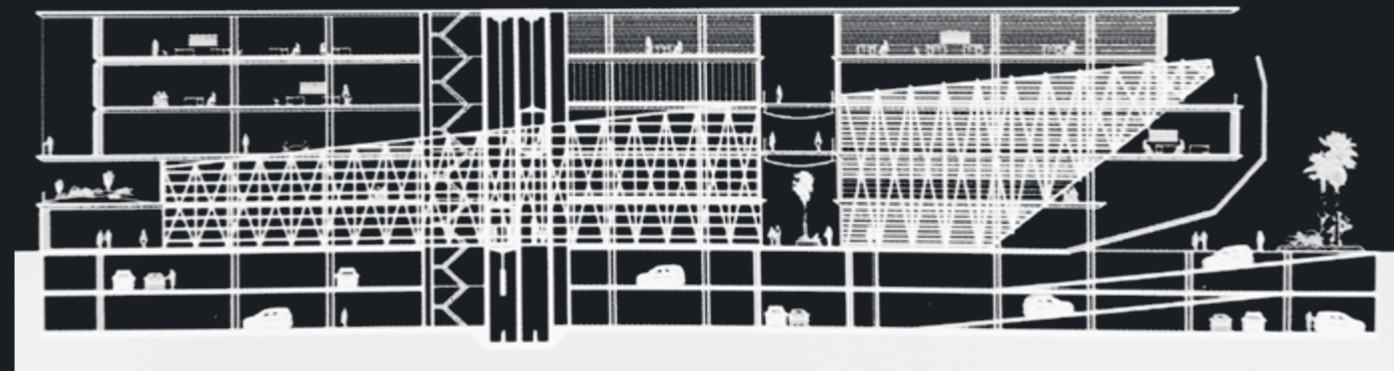


2 Bedroom Unit Floor Plan



3D Perspective of the Academy

POLICE ACADEMY ABU DHABI



Longitudinal Section of the Academy

The architecture reflects the protective power of the Police force. A solid organic ring wraps around the building and is the main circulation for the conference facilities. In-bound the ring, are the atrium and a monolithic screened box acting as the core of the facilities and all its functions.



3D Perspectives of Damac Heights

DAMAC HEIGHTS DUBAI MARINA

ROLE
Architect, 3D Visualiser

LEAD ARCHITECT
Aedas Architects

PARTNERING ARCHITECT
Martin Dufresene (U+A Architects)

CLIENT
DAMAC

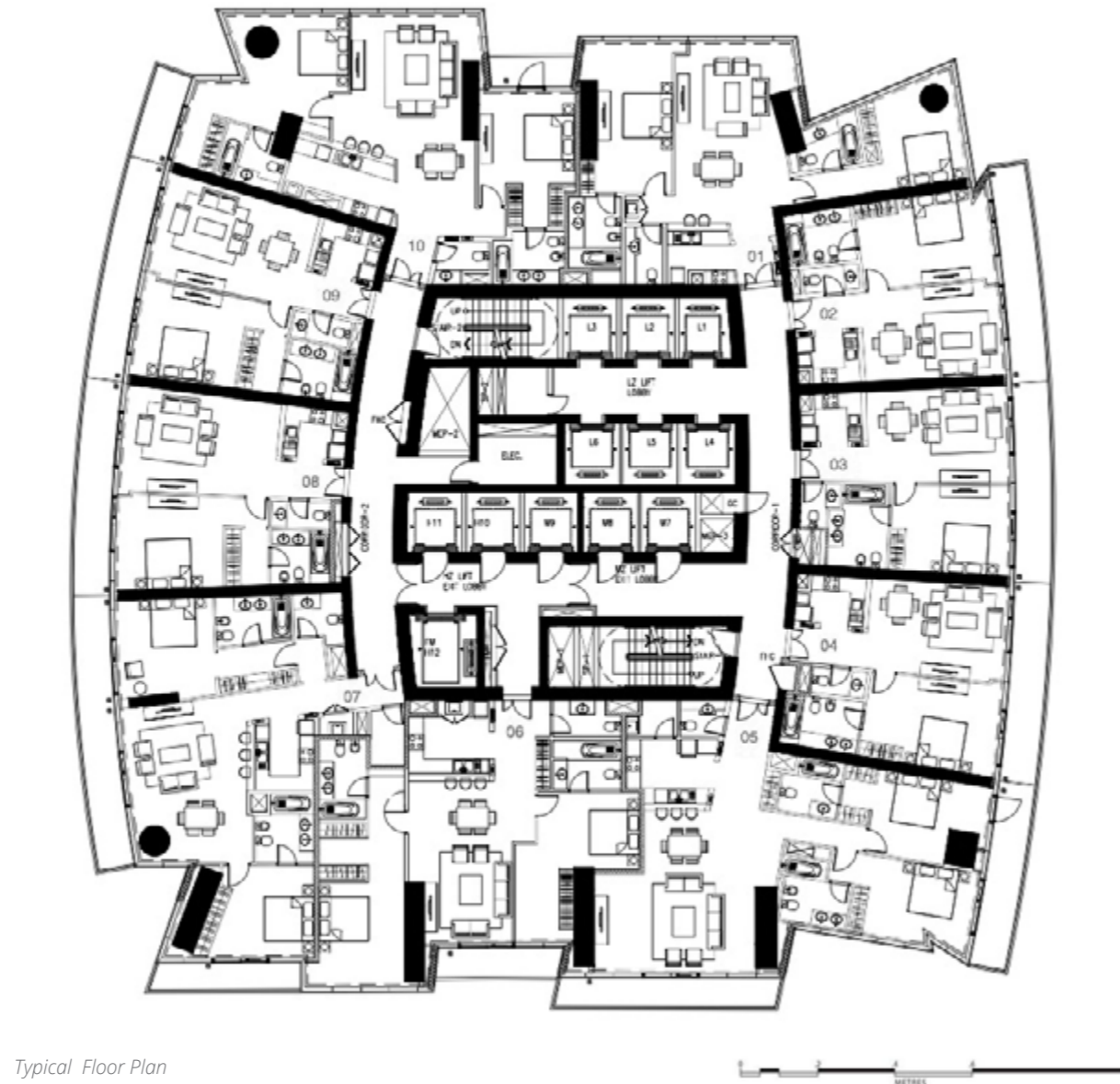
CATEGORY
Commercial, Hospitality, Retail, Mixed-Use, Sports

PROJECT DETAILS
Plot: 114,000 sqm

PHASE
Complete

DAMAC Heights is located in Dubai Marina along its “sister” project, Ocean Heights. At 420 m in height and 100 floors, it will be the tallest tower in its vicinity. However, unlike its predecessor, the requirements for more modularized units up to the 60th floor, forced a different approach while intending to maintain the spirit of its sister.

The curved shape of the tower improves views past its densely located neighbours. The playfulness of this tower was concentrated into the two most visible faces, allowing units to bend up the tower in two blades. These blades were still modularized up to the 60th floor before the tight restrictions of unit area fluctuations become more relaxed.



Typical Floor Plan



Level 15 Floor Plan



Level 25 Floor Plan



Level 37 Floor Plan

CONSTRUCTION PHOTOS



CAPITAL GATE TOWER

ROLE

Concept Architect, Architect,
Interior Architecture + Design, 3D visualiser

LEAD ARCHITECT

Martin Dufresene (*U+A Architects*)

CLIENT

Abu Dhabi National Exhibition Company

CATEGORY

Mixed-Use

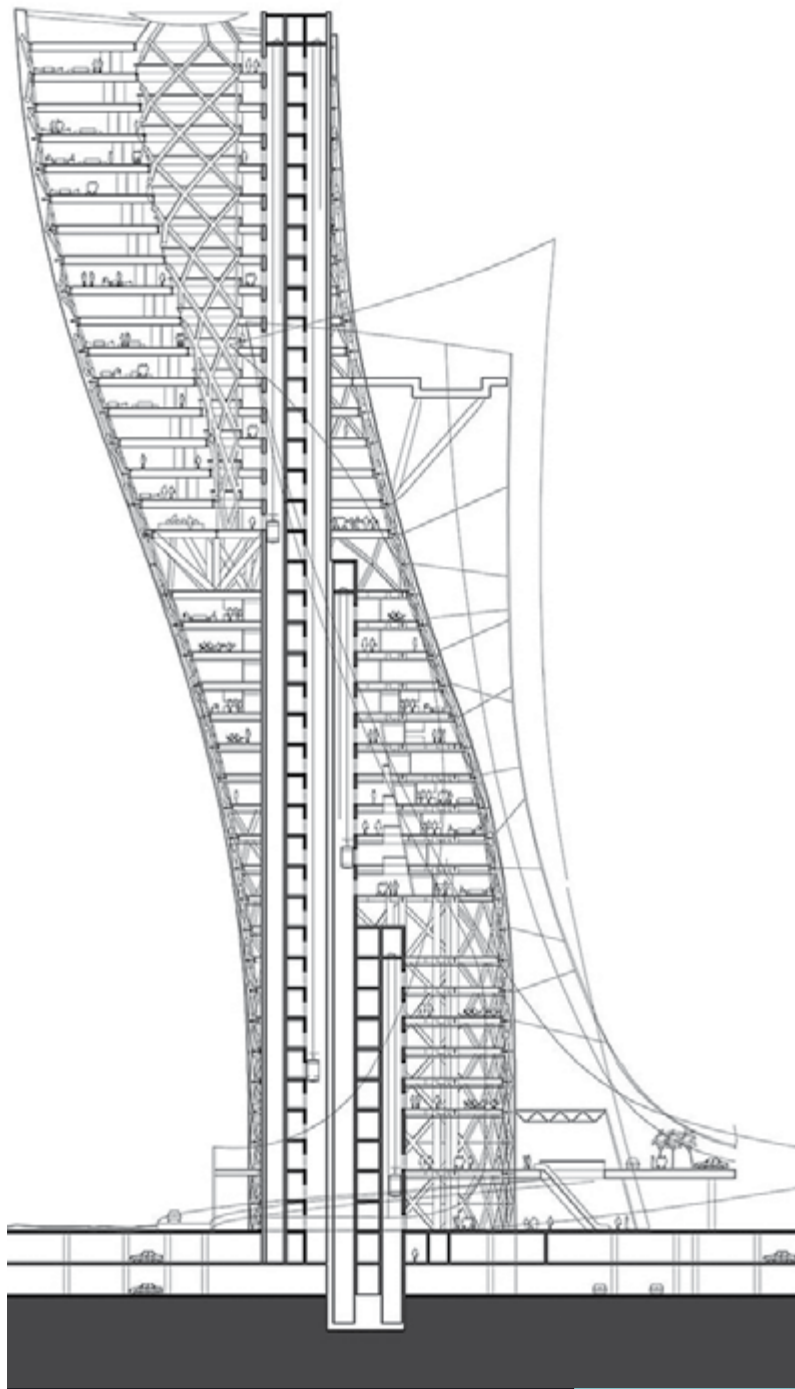
PROJECT DETAILS

Plot Size: 880,000W sqm

PHASE

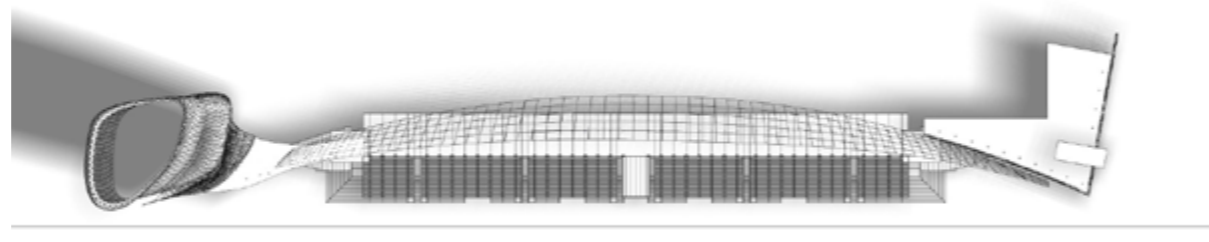
Construction Complete





CAPITAL GATE TOWER

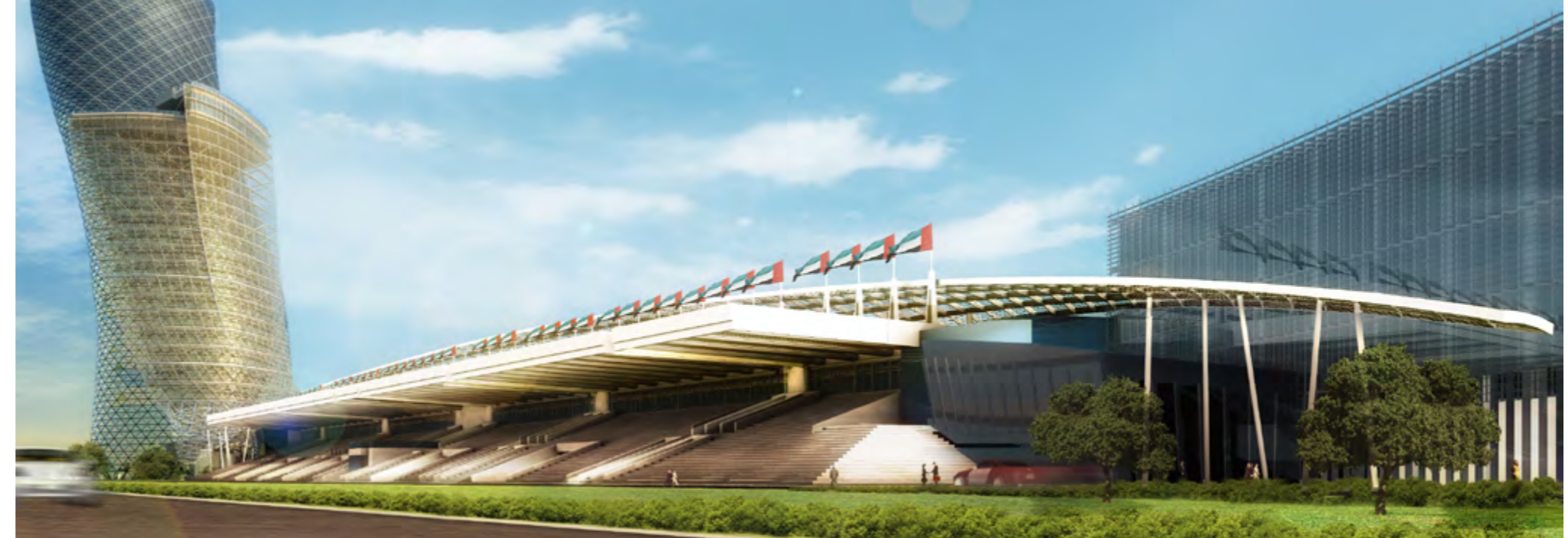
The design's inspiration behind the unusual organic form stems from a figurative interpretation of a ship's hull splitting waves. The sea and maritime transportation bear an essential role in the development of the UAE, and Dufresne celebrates this in his design. Energy, fluidity and dynamism complement the idea of the sea throughout the architecture.



Top view of the roofing structure

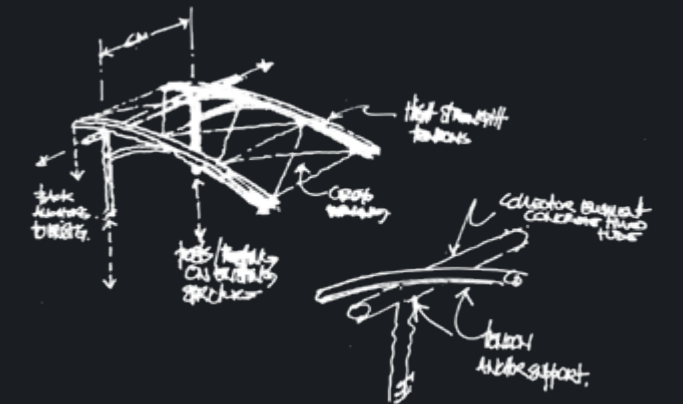


Section analysis of the roofing structure



Above: 3D Perspective of Capital Gate and Stand Roof Structure

SKETCHES





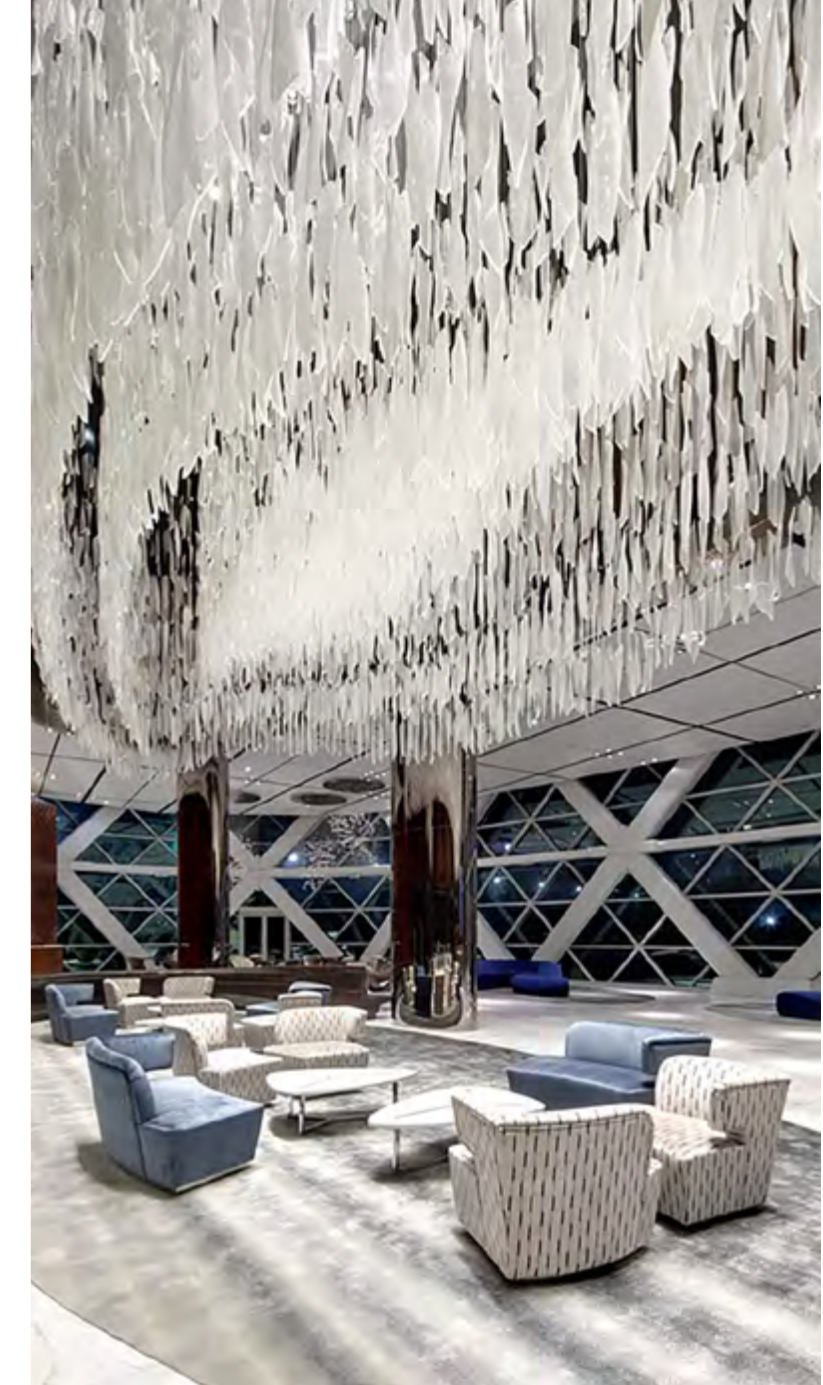
CAPITAL GATE LOBBY INTERIOR DESIGN

It is unquestionable that the fluidity is embodied through Capital Gate's form. It is pure and organic. Likewise all its integral elements shall be devoted to the architectural concept. We also foresee relevance in fluid and movement within the interiors in order to celebrate this architecture. Water is a recurring notion in the tower's design. As much as possible it should be incorporated in the elements of the interiors through fluid shapes and patterns.

The architecture is undeniably dynamic. Not unlike water, movement should also be part of the interior's concept. This can be achieved by the shape of elements such as pendant lights or otherwise in the graphics and wall textures.



Custom made food bar



MARIAM MALL

ROLE
Concept Architect, Architect,
Interior Architecture + Design, 3D visualiser

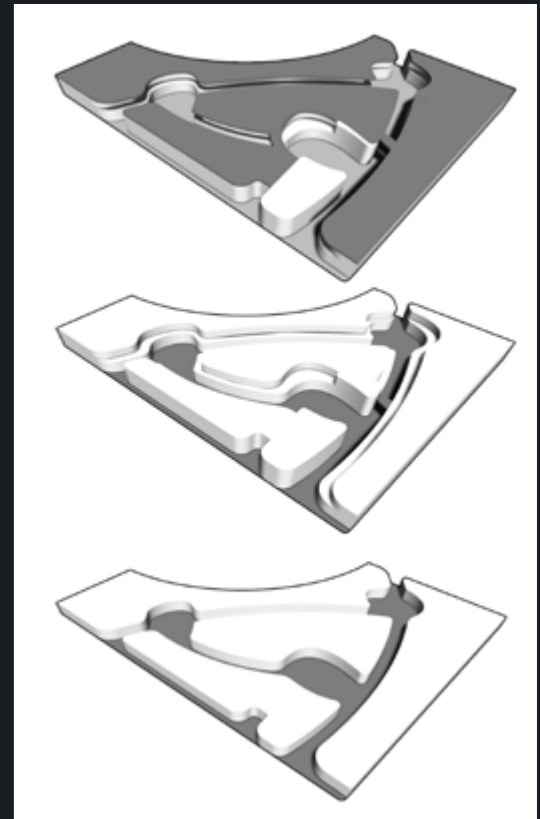
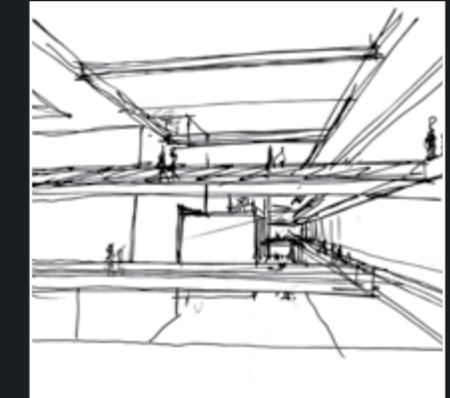
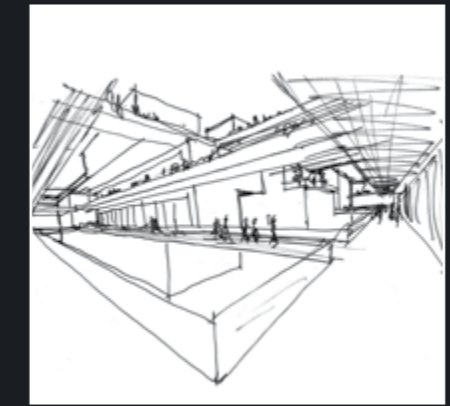
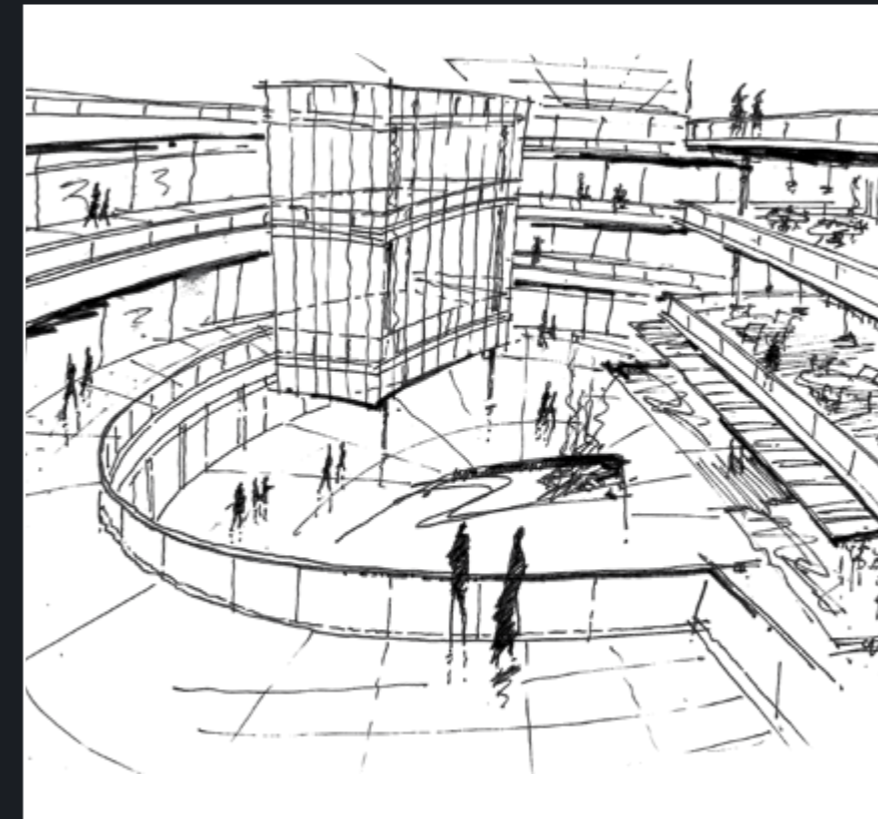
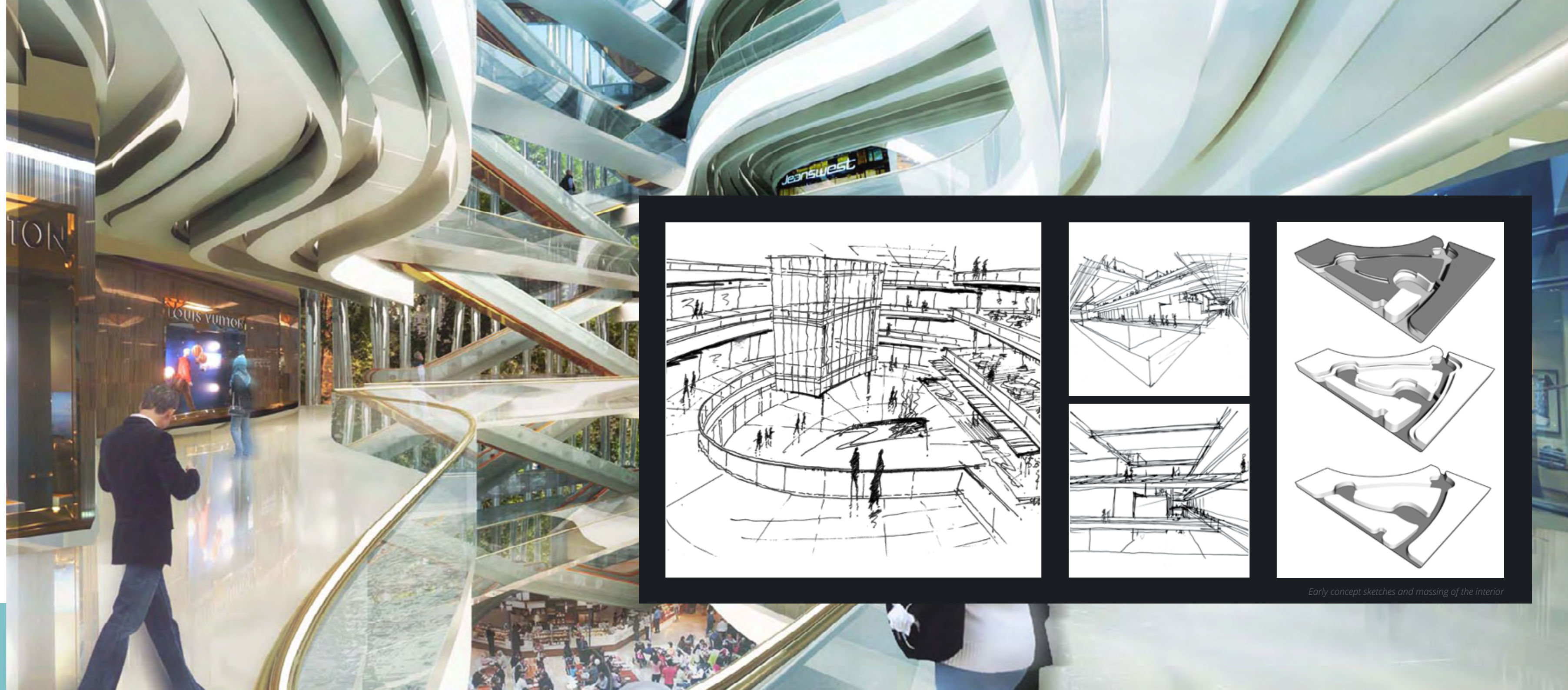
LEAD ARCHITECT
Martin Dufresene (*U+A Architects*)

CLIENT
Confidential

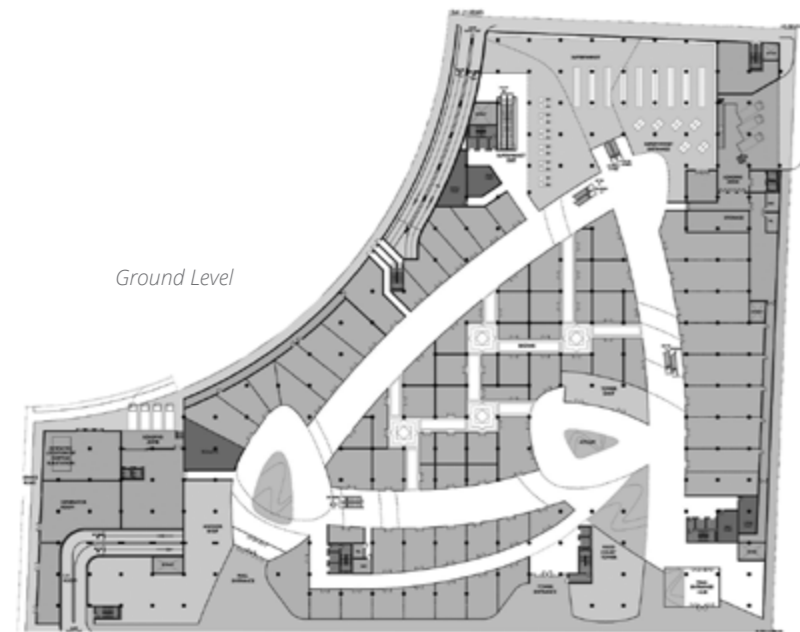
CATEGORY
Retail

PROJECT DETAILS
Plot Size: 55,000 sqm

PHASE
On Hold



Early concept sketches and massing of the interior



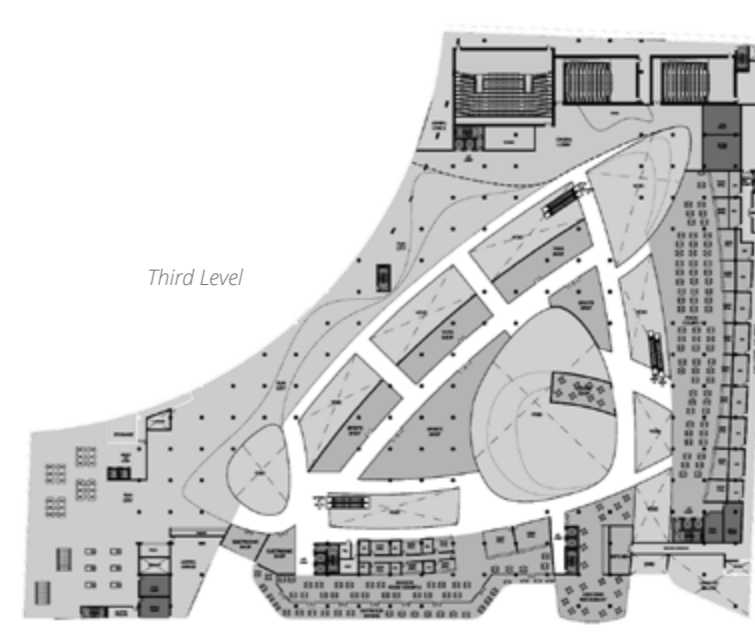
Ground Level



First Level



Second Level



Third Level

MARIAM MALL

The architectural concept behind Mariam Mall was inspired by the unique natural elements of the site. The surrounding terrain of the area was so unique it had to be incorporated within the design. The curves and turns of each level provides the customers a platform for unparalleled interactive experiences while shopping. Another key factor of the Mall's interior were the atriums and to bring in as much daylight as possible.



DFWAC CLINIC

ROLE

Concept Architect, Architect,
Interior Architecture + Design, 3D visualiser

LEAD ARCHITECT

Martin Dufresene (*U+A Architects*)

CLIENT

Dbai Foundation for Women and Children

CATEGORY

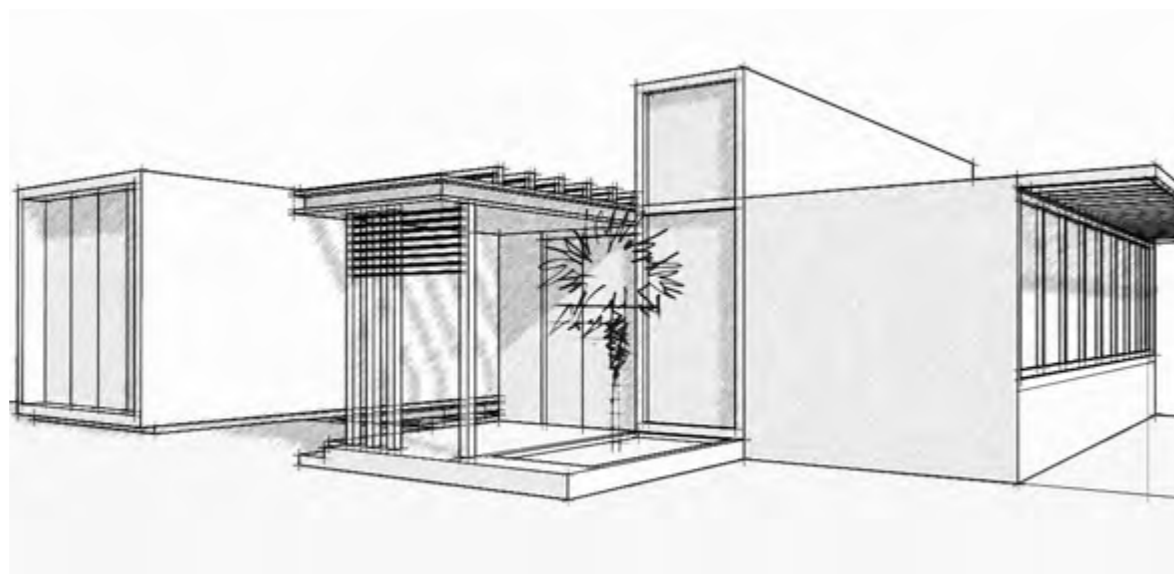
Clinic Office

PROJECT DETAILS

Plot Size: 22,000 sqm

PHASE

Construction Complete



Sketches of DFWAC exterior





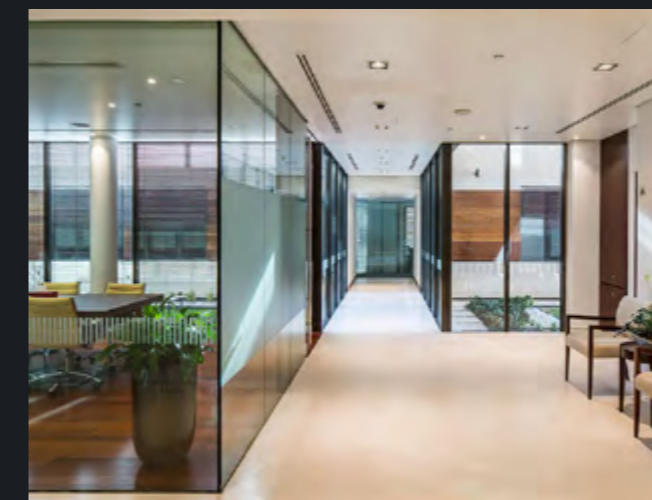
DFWAC CLINIC INTERIOR



3D Interior Perspectives

The Client's leading criteria behind the design of the Dubai Foundation for Women and Children was to create a peaceful 'Healing' environment for its guests. Balance, harmony, security, comfort and above all, a sense of belonging can have a major influence and effect on person's recovery from trauma. Nature is a key driver for achieving these important characteristics, which is embodied by an indoor-outdoor courtyard, providing natural light and ventilation. The Japanese Garden was the primary source of inspiration behind this concept. The logical balance between these design elements creates peace and harmony.

INTERIOR PHOTOS



RESIDENTIAL INTERIORS



ROLE
Interior Architecture + Design, 3D visualiser

LEAD INTERIOR DESIGNER
Amr A. Fattah

CLIENT
Various

CATEGORY
Residential

PHASE
Completed





OFFICE INTERIORS

ROLE
Interior Architecture + Design, 3D visualiser

LEAD INTERIOR DESIGNER
Amr A. Fattah

CLIENT
Various

CATEGORY
Office

PHASE
Completed

